

CONTENT

1. TECHNIQUE REQUIREMENT	2
2. HOW TO ACTIVATE TOKEN	2
3. INSTALL SAFENET	2
4. ACTIVATE TOKEN	4
5. CHANGE TOKEN PASSWORD.....	6

TOKEN USER GUIDE (VCB - iB@nking)

1. TECHNIQUE REQUIREMENT

- Internet connection.
- Operation system: Window XP or higher version (Vista, ...)
- USB port
- The computer should be installed Java 6. If not, VCB-iB@nking will inform customer to complete this installation. You also can download the lastest version at: java.com
- Etoken can be used on some browsers, such as: Internet Explorer; FireFox and Chrome (CPU 32 bit)

2. HOW TO ACTIVATE TOKEN

- Install Safenet
- Activate Token on VCB-iB@nking

3. INSTALL SAFENET

Step 1: Sign in VCB-iB@nking

Step 2: Choose menu **Activate Token**

- If the computer haven't installed Safenet. The program informs and provides link to download it. Click **OK** to implement

Step 3: Download **Safenet**

Step 4: Install **SafeNet**

Note: If your operation system is Window 7, using Administrator right to install it (click right mouse on installer and choose **Run as Administrator**)





Step 5: Choose menu **Activate Token** to activate the Token.

4. ACTIVATE TOKEN

Step 1: Sign in VCB-iB@nking

Step 2: Choose menu **Activate Token**.

- If the computer haven't installed Safenet. The program informs and provides link to download it. Click **OK** to implement
- If the software is installed successfully:

Activate token	
Token type	eToken <input type="button" value="v"/>
Token Serial No	<input type="text"/>
IB@nking password	<input type="text"/>
Token password	<input type="text"/> <input type="button" value="Get OTP!"/>
OTP	<input type="text"/>
<input type="button" value="Activate"/>	

Step 3: Plug Token in the computer

Step 4: Fill information

- Token serial no

- IB@nking password
- Token password
- Choose **Get OTP**
- Click **Activate**

Step 5: The program informs activation result

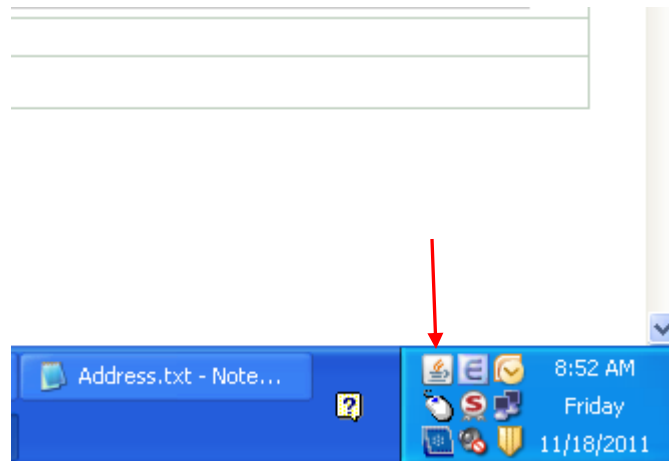
Note:

You can see a question on Web browser:



Choose: **Luôn chạy trên trang web này** (Web browser always allows java running on itself)

If Java is running on the system, Java icon will be displayed as follow:

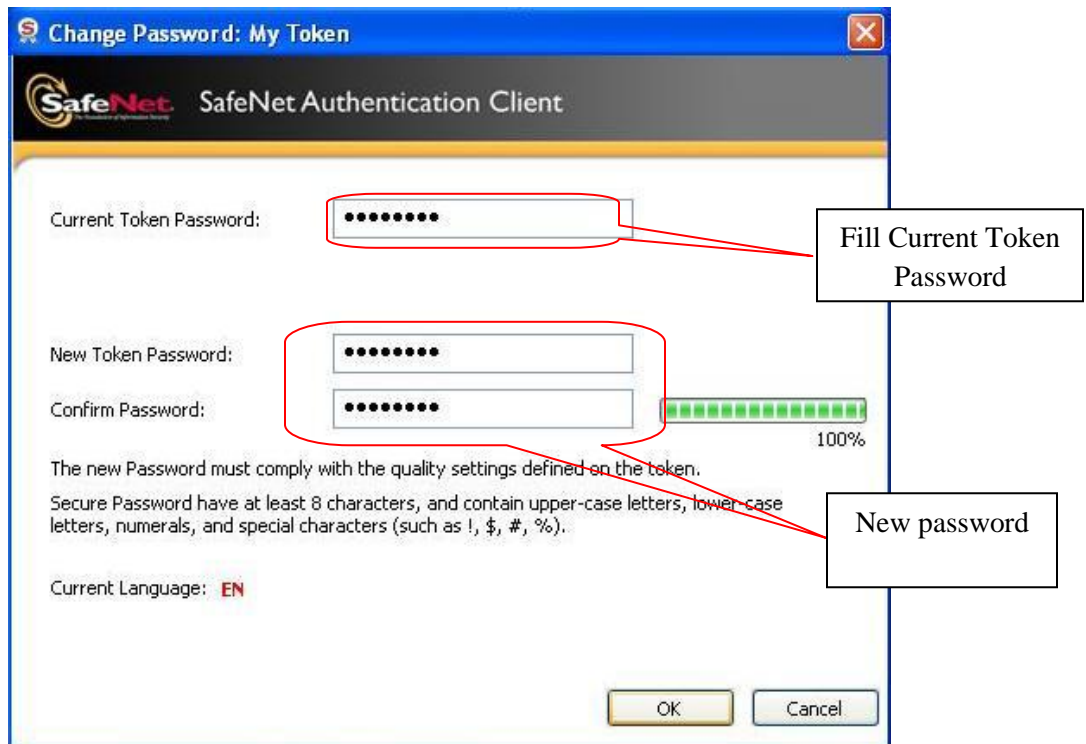


5. CHANGE TOKEN PASSWORD

Step 1: Run Safenet and plug Token in the computer



Step 2: Choose “Change Token Password”



- Click **OK**

